

# Coleman Limousin Ranch

## 32nd Annual Production Sale

Missoula Livestock Exchange  
Missoula, Montana  
Tuesday, April 6, 2010 – 1 p.m.



**Selling 145 Lots**  
**120 Bulls (many 1/2 and 3/4 brothers)**  
**60 yearling purebred bulls, 60 yearling Lim-Flex bulls**  
**25 yearling purebred and Lim-Flex heifers**

### SALE MANAGEMENT



SEEDSTOCK CONSULTANTS SPECIALIZED SALES  
3212 Collinsworth • Fort Worth, Texas 761-7  
Ph: 817/877-3031 • Fax 817/877-3033  
Keith Kissee • 804/353-2220 • Cell 817/821-8263  
e-mail: kkseestock@aol.com

**AUCTIONEER**  
C.K. "Sonny" Booth

**SALE DAY PHONE**  
(406) 728-3052

**SALE HEADQUARTERS**  
Days Inn (406) 721-9776

*The airport is located 3 miles from the sale site.*



For more information and a sale catalog:

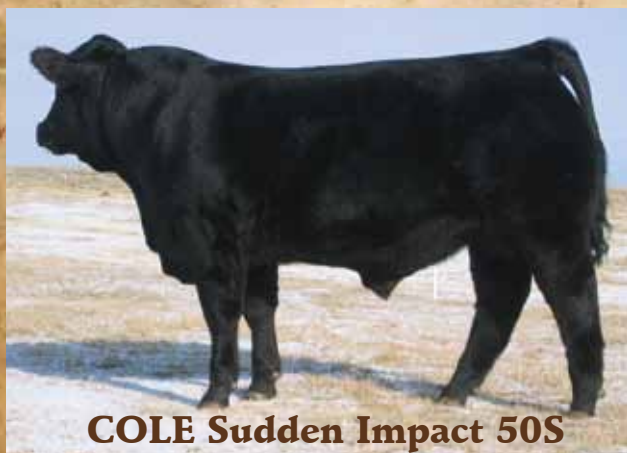
53717 Gallagher Road  
Charlo, MT 59824

Larry & Anita Coleman  
(406) 644-2300

Trent & Melissa Coleman  
(406) 644-2707

**website: colemanlimousinranch.com**

# Coleman Limousin Ranch Herd Sires



**COLE Sudden Impact 50S**

**Sire: COLE Black Tank 24P**  
**Dam: COLE 7100G (First Down)**  
**Born: 02-23-06**

**Homozygous Black, Polled**  
EPD's - CED: 4, BW: 5.0, WW: 71, YW: 124, MA: 23, CEM: 5,  
SC: 1.1, DOC: 9, CW: 73, REA: 1.13, YG: -0.13, MARB: -0.04, \$MTI: 51

Sudden Impact was the lead bull in our 2007 People's Choice Champion Carload and the top seller in our 2007 sale. He was one of the most powerful Limousin bulls to ever sell. He ranks in the top 1% for weaning weight, yearling weight and ribeye. Sudden Impact also ranks in the top 5% for scrotal and \$MTI. His calves excel in muscle and performance.

Semen: \$40 per unit

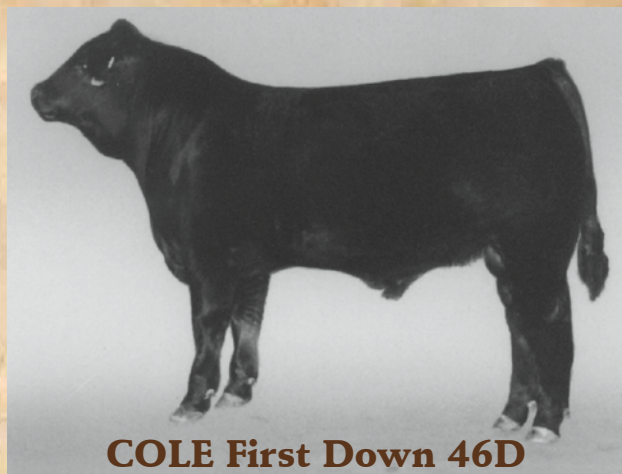
**Sire: LKCC Tomahawks Touchdown**  
**Born: 03-20-94**

**Homozygous Black, Homozygous Polled**

EPD's - CED: 8, BW: 1.3, WW: 43, YW: 91, MA: 23, CEM: 10, SC: 1.2,  
STAY: 32, DOC: 29, CW: 20, REA: 0.07, YG: 0.15, MARB: 0.09, \$MTI: 45

First Down is definitely a proven sire that will change a program. He is a leader in many traits. Being the #1 ranked proven sire for stayability makes him a very elite and profitable bull. Cows that stay in the herd and produce consistently contribute to the success of a program. First Down has made a mark on our program. He would be an excellent choice for producing Lim-Flex heifers and also to be used in purebred herds.

Semen: \$30 per unit



**COLE First Down 46D**



**COLE Toolbox 89T**

**Sire: Carrousel Pure Power**  
**Dam: COLE 319N (Wulf Hunt)**  
**Born: 03-03-07**

**Homozygous Black, Homozygous Polled**

EPD's - CED: 5, BW: 3.6, WW: 58, YW: 100, MA: 13, CEM: 1,  
SC: 0.6, DOC: 9, CW: 32, REA: 1.06, YG: -0.14, MARB: 0.04, \$MTI: 50

Toolbox was in our 2008 People's Choice carload and the top seller in our 2008 Sale. He scanned an impressive 19.2 inch ribeye and 4.47% IMF as a yearling. Toolbox ranks in the top 10% for weaning and yearling and in the top 1% for ribeye.

Semen: \$40 per unit

**Sire: Gar Precision 1680**  
**Dam: Coleman Blackcap 211 (Leachman Right Time)**  
**Born: 01-19-06**

**Homozygous Black, Homozygous Polled**

EPD's - CED: 10, BW: -1.7, WW: 74, YW: 126, MA: 31, CEM: 0, SC: -0.2,  
STAY: 8, DOC: 1, CW: 80, REA: -0.37, YG: 0.82, MARB: 0.81, \$MTI: 75

\*Limousin crossover EPD'S

Production is a tremendous Angus bull that we added to our program to produce Lim-Flex cattle. He is a very deep, thick-made Angus bull that scanned a 15 inch ribeye and a 5.32 IMF score. He has tremendous growth, carcass and maternal value. His calves are moderate, deep and thick. Production sired the bulls in our 2009 and 2010 Reserve Champion Lim-Flex pen. Coleman Production tested negative for AM and hydro.

Semen: \$40 per unit



**Coleman Production 608**

# Coleman Limousin Denver Champions



**2010 People's Choice Grand Champion Carload**

## Averages

Age:2/25/09 Weight:1140 WDA:3.54 Frame:6.3 Scrotal:33.3 Fat:0.24 REA:16.8  
BW:2.5 WW:49 YW:89 MA:19 RE:0.54 MS:-0.02 \$MTI:45

This is the 9th time in the last 13 years that we have been awarded The People's Choice Grand Champion Carload. These sons of COLE Sudden Impact 50S, COLE Toolbox 89T, COLE First Down 46D, EXLR Rebound 704R, HC Final Time 407, and Carrousel's Pure Power are moderate framed and have excellent growth and carcass traits.



**2010 Reserve Champion Lim-Flex Pen of Three**

## Averages

Age:3/4/09 Weight:1307 WDA:4.15 Frame:6.4 Scrotal:35.3 Fat:0.35 REA:15.3  
BW:2.0 WW:73 YW:123 MA:30 RE:-0.02 MS:0.44 \$MTI:65

Here is one of the sale features – the 2010 National Western Reserve Champion Lim-Flex pen of three. These bulls are exactly what we are trying to accomplish in our Lim-Flex program – cattle that combine low birth weights, high growth, fleshing ability, muscle, and tremendous carcass traits in one package. All three bulls are sons of Coleman Production 608.

Bull #	Color & Percent Limousin	Homozygous Black	Sire	Birth Date	Birth Weight	205 Day Weight	1/22/10 Weight	Birth EPD	WW EPD	YW EPD	Milk EPD	REA EPD	MARB EPD	\$MTI EPD
1	Black Purebred	No	HC Final Time 407	2/11	86	693	1110	2.7	46	85	14	0.34	0.10	47
2	Black Lim-Flex 50	No	Coleman Production 608	2/11	78	689	1138	0.2	55	94	20	0.07	0.39	58
3	Black Lim-Flex 50	No	Coleman Production 608	2/11	76	694	1118	0.3	56	101	22	0.07	0.38	58
4	Black Purebred	No	COLE Sudden Impact 50S	2/12	82	648	1002	0.7	43	85	19	0.73	-0.04	43
5	Black Lim-Flex 50	Yes	Coleman Production 608	2/12	84	683	1096	-0.1	52	94	24	-0.09	0.40	57
6	Black Purebred	Yes	AUTO Dollar General 122R	2/12	64	637	962	1.3	54	102	21	0.43	0.13	50
7	Black Purebred	No	AUTO Dollar General 122R	2/12	66	650	1010	1.4	53	97	19	0.38	0.07	48
8	Black Lim-Flex 50	No	Coleman Production 608	2/13	90	724	1135	0.6	59	106	23	0.10	0.43	60
9	Black Lim-Flex 50	No	Coleman Production 608	2/14	72	654	1078	-1.9	45	85	22	-0.12	0.41	55
10	Black Lim-Flex 50	Yes	Coleman Production 608	2/14	88	606	1070	-0.9	45	84	17	-0.21	0.40	55
13	Black Lim-Flex 50	No	Coleman Production 608	2/16	94	742	1300	1.5	61	109	25	-0.06	0.41	60
14	Black Lim-Flex 50	Yes	Coleman Production 608	2/16	78	574	1032	-1.6	40	81	21	-0.13	0.43	54
17	Black Lim-Flex 50	Yes	Coleman Production 608	2/17	80	767	1300	0.5	55	99	25	-0.10	0.42	59
18	Red Purebred	No	Carrousel Pure Power	2/17	92	750	1226	3.9	51	95	17	0.58	-0.09	43
19	Black Purebred	Yes	Carrousel Pure Power	2/18	90	748	1166	2.5	46	86	12	0.46	-0.06	42
20	Black Lim-Flex 50	No	Coleman Production 608	2/18	76	783	1204	0.0	60	104	20	-0.09	0.37	59
21	Black Lim-Flex 50	Yes	Coleman Production 608	2/18	68	642	1128	-2.6	45	86	22	-0.13	0.42	56
23	Black Lim-Flex 50	Yes	Coleman Production 608	2/18	76	647	1028	-0.7	49	85	24	0.09	0.42	57
24	Black Lim-Flex 50	Yes	Coleman Production 608	2/18	98	723	1125	3.4	64	108	19	-0.06	0.30	57
26	Black Purebred	Yes	COLE Sudden Impact 50S	2/19	88	642	962	2.8	43	87	25	0.76	-0.01	43
27	Black Purebred	No	Carrousel Pure Power	2/19	86	650	922	2.0	41	80	7	0.44	-0.06	41
28	Black Lim-Flex 50	Yes	Coleman Production 608	2/19	78	758	1146	-0.5	57	100	27	0.00	0.37	58
29	Black Purebred	No	COLE Sudden Impact 50S	2/20	84	727	1240	2.2	50	92	24	0.72	0.00	46
30	Black Purebred	No	Carrousel Pure Power	2/20	78	744	1152	1.2	42	76	16	0.53	-0.14	38
31	Black Purebred	Yes	COLE Toolbox 89T	2/20	82	716	1138	2.9	45	84	17	0.55	0.03	45
32	Black Purebred	Yes	COLE Toolbox 89T	2/20	76	727	1180	0.3	45	83	19	0.55	0.01	44
33	Black Purebred	No	COLE Sudden Impact 50S	2/21	88	780	1320	4.8	64	107	19	0.77	-0.01	50
34	Black Purebred	Yes	COLE Sudden Impact 50S	2/21	94	726	1062	5.3	64	111	19	0.92	-0.05	48
36	Black Lim-Flex 50	Yes	Coleman Production 608	2/22	72	728	1134	-1.9	51	93	33	0.02	0.41	57
37	Black Lim-Flex 50	Yes	Coleman Production 608	2/22	84	731	1086	-0.1	59	105	21	0.09	0.40	59
38	Black Purebred	Yes	AUTO Dollar General 122R	2/22	66	721	1012	0.5	51	95	29	0.35	0.08	48
39	Black Purebred	Yes	COLE Sudden Impact 50S	2/23	92	729	1240	4.4	59	108	20	0.74	-0.02	48
40	Black Purebred	No	Carrousel Pure Power	2/23	84	695	1142	1.7	43	81	9	0.43	-0.10	40
41	Black Purebred	Yes	Wulfs Nasa 1212N	2/23	60	617	875	-1.0	37	71	24	0.23	0.03	43
43	Black Lim-Flex 50	Yes	Coleman Production 608	2/24	86	874	1214	0.6	67	112	33	-0.03	0.45	63

Bull #	Color & Percent Limousin	Homozygous Black	Sire	Birth Date	Birth Weight	205 Day Weight	1/22/10 Weight	Birth EPD	WW EPD	YW EPD	Milk EPD	REA EPD	MARB EPD	\$MTI EPD
45	Red Purebred	No	Carrusels Pure Power	2/24	92	739	1060	4.6	58	100	12	0.47	-0.04	46
46	Black Purebred	Yes	Carrusels Pure Power	2/24	82	721	1162	0.4	40	77	16	0.41	-0.05	40
47	Black Lim-Flex 50	No	Coleman Production 608	2/24	76	693	1032	0.0	59	104	20	-0.14	0.40	58
48	Black Purebred	Yes	COLE First Down 46D	2/24	80	768	1154	-0.2	39	75	32	0.22	-0.02	41
50	Black Lim-Flex 50	No	Coleman Production 608	2/24	74	731	1066	-1.1	56	96	25	0.11	0.40	58
51	Black Purebred	No	Carrusels Pure Power	2/24	82	636	934	1.5	35	66	9	0.52	-0.15	37
54	Black Lim-Flex 50	No	Coleman Production 608	2/25	90	724	1100	2.3	61	105	20	0.03	0.34	58
55	Black Lim-Flex 50	Yes	Coleman Production 608	2/25	84	848	1340	1.7	71	119	24	-0.02	0.46	65
57	Black Lim-Flex 75	Yes	Wulfs Nasa 1212N	2/26	66	631	946	-0.9	37	77	29	-0.07	0.13	45
58	Black Lim-Flex 50	No	Coleman Production 608	2/26	74	733	1094	-0.2	61	103	22	-0.09	0.40	59
59	Black Lim-Flex 50	Yes	Coleman Production 608	2/26	78	711	1072	0.3	60	104	19	-0.05	0.41	59
60	Black Purebred	No	COLE Toolbox 89T	2/27	98	848	1252	4.4	62	106	17	0.65	0.05	52
62	Black Purebred	No	HC Final Time 407	2/27	92	750	1174	4.4	54	96	12	0.37	0.03	48
66	Black Lim-Flex 50	No	Coleman Production 608	2/27	74	680	1026	0.9	61	112	26	0.01	0.47	62
67	Black Lim-Flex 50	No	Coleman Production 608	2/27	86	784	1176	0.7	57	98	24	-0.13	0.39	58
69	Black Lim-Flex 50	Yes	Coleman Production 608	2/27	72	708	1055	0.9	61	112	26	0.01	0.47	62
71	Black Lim-Flex 50	Yes	Coleman Production 608	2/28	90	758	1166	2.3	67	117	23	0.07	0.40	62
72	Red Purebred	No	Carrusels Pure Power	3/1	84	716	1066	2.4	50	88	7	0.35	-0.06	42
73	Black Purebred	No	COLE Toolbox 89T	3/1	76	711	1072	1.3	45	84	18	0.61	0.03	45
75	Black Lim-Flex 50	Yes	Coleman Production 608	3/2	78	612	1058	-0.4	51	95	22	0.01	0.38	56
76	Black Lim-Flex 50	Yes	Coleman Production 608	3/2	80	678	1105	-0.1	59	104	22	0.04	0.40	59
77	Black Lim-Flex 50	No	Coleman Production 608	3/2	76	720	1040	-0.4	58	101	18	-0.08	0.40	58
78	Black Lim-Flex 50	No	Coleman Production 608	3/2	84	774	1280	2.1	70	120	23	0.12	0.36	61
79	Black Purebred	No	Carrusels Pure Power	3/2	86	654	964	2.5	42	76	7	0.49	-0.10	40
80	Black Purebred	Yes	COLE Toolbox 89T	3/2	88	703	1062	3.2	46	87	23	0.64	-0.02	43
81	Black Purebred	Yes	COLE Sudden Impact 50S	3/2	92	721	1054	4.8	58	100	23	0.64	0.00	48
82	Black Lim-Flex 50	No	Coleman Production 608	3/3	84	687	994	1.9	64	112	19	-0.07	0.39	60
84	Black Lim-Flex 50	Yes	Coleman Production 608	3/3	88	837	1360	2.0	70	122	32	0.10	0.40	62
85	Black Lim-Flex 50	No	Coleman Production 608	3/4	80	730	1050	-0.1	50	106	26	0.00	0.39	58
86	Black Purebred	No	Carrusels Pure Power	3/4	88	695	996	3.8	51	89	12	0.70	-0.08	42
87	Black Lim-Flex 50	No	Coleman Production 608	3/4	78	755	1094	-0.7	61	105	20	0.07	0.43	61
88	Black Purebred	Yes	Carrusels Pure Power	3/4	86	775	1186	2.5	53	93	13	0.78	-0.03	46
89	Black Purebred	No	EXLR Rebound 704R	3/4	78	752	1070	0.7	49	88	24	0.65	0.01	46
91	Black Lim-Flex 50	No	Coleman Production 608	3/5	82	689	990	0.6	60	104	21	0.05	0.41	59
92	Black Purebred	Yes	COLE Sudden Impact 50S	3/5	90	621	1002	2.9	47	93	26	0.83	-0.05	43

# Coleman Limousin Purebred Bulls



**COLE Westward 151W**

03/14/09 BW: 86 Adj WW: 772  
 EXLR Rebound 704R x COLE 893H(First Down)  
 CED: 7 BW: 2.1 WW: 54 YW: 92 MA: 26 SC: 0.8  
 RE: 0.59 MS: 0.02 \$MTI: 47

A powerful homozygous black Rebound son.



**COLE Warranty 33W**

02/21/09 BW: 88 Adj WW: 780  
 COLE Sudden Impact 50S x COLE 117L(Jag)  
 CED: 5 BW: 4.8 WW: 64 YW: 107 MA: 19 SC: 0.7  
 RE: 0.77 MS: -0.01 \$MTI: 50

The lead bull in our People's Choice Champion Carload.



**COLE Western 110W**

02/23/09 BW: n/a Adj WW: 727  
 HC Final Time 407 x COLE 050K(First Down)  
 CED: 4 BW: 4.0 WW: 46 YW: 89 MA: 23 SC: 1.1 RE: 0.44  
 MS: 0.08 \$MTI: 47

A homozygous black bull out of our popular 050K donor cow.



**COLE Workout 31W**

02/20/09 BW: 82 Adj WW: 717  
 COLE Toolbox 89T x COLE 722G(First Down)  
 CED: 9 BW: 2.9 WW: 45 YW: 84 MA: 17 SC: 0.8 RE: 0.55  
 MS: 0.03 \$MTI: 45

Homozygous black and homozygous polled.



**COLE Wilderness 46W**

02/24/09 BW: 82 Adj WW: 721  
 Carrousel's Pure Power x COLE 234M(First Down)  
 CED: 9 BW: 0.4 WW: 40 YW: 77 MA: 16 SC: 0.9 RE: 0.41  
 MS: -0.05 \$MTI: 40

Homozygous black.



**COLE Wallstreet 88W**

03/04/09 BW: 86 Adj WW: 776  
 Carrousel's Pure Power x COLE 319N(Wulf Hunt)  
 CED: 7 BW: 2.5 WW: 52 YW: 93 MA: 13 SC: 0.6 RE: 0.78  
 MS: -0.03 \$MTI: 46

Homozygous black and a full brother to COLE Toolbox 89T.

# Coleman Limousin Lim-Flex Bulls



**COLE Weapon55W**

02/25/09 BW: 84 Adj WW: 849  
Coleman Production 608 x COLE 509R(COLE Magnum)  
CED: 8 BW: 1.7 WW: 71 YW: 119 MA: 24 RE: -0.02 MS:  
0.46 \$MTI: 65

Homozygous black and polled. A member of our Reserve  
Champion Lim-Flex Pen.



**COLE Windfall 144W**

3/12/09 BW: 92 Adj WW: 968  
Coleman Production 608 x COLE Miss First Down 6162S  
CED: 6 BW: 2.2 WW: 78 YW: 129 MA: 34 RE: -0.14 MS:  
0.46 \$MTI: 67

Homozygous black and the lead bull in our Reserve  
Champion Lim-Flex Pen. Ranks in the top 1% for  
weaning, yearling and \$MTI.



**COLE Winterday 13W**

02/16/09 BW: 94 Adj WW: 742  
Coleman Production 608 x COLE 312N(First Down)  
CED: 7 BW: 1.5 WW: 61 YW: 109 MA: 25 RE: -0.06 MS: 0.41  
\$MTI: 60

Homozygous polled.



**COLE Warrior 84W**

03/03/09 BW: 88 Adj WW: 840  
Coleman Production 608 x COLE Miss First Down 6166S  
CED: 5 BW: 2.0 WW: 70 YW: 122 MA: 32 RE: 0.10 MS:  
0.40 \$MTI: 62

Homozygous black and polled. A member of our Reserve  
Champion Lim-Flex Pen.

- Complete performance data available
- Ribeye, backfat, and marbling scores
- Bulls semen tested and scrotal measured
- Pelvic measurements for heifers
- Trucking arrangements available

Not to exceed \$250 in USA.

**website: colemanlimousinranch.com**

Bull #	Color & Percent Limousin	Homozygous Black	Sire	Birth Date	Birth Weight	205 Day Weight	1/22/10 Weight	Birth EPD	WW EPD	YW EPD	Milk EPD	REA EPD	MARB EPD	\$MTI EPD
93	Black Lim-Flex 50	No	Coleman Production 608	3/5	98	758	1100	3.6	62	109	28	-0.02	0.37	59
95	Black Purebred	No	COLE Toolbox 89T	3/6	86	671	1018	1.2	42	79	21	0.68	0.06	45
96	Black Lim-Flex 50	Yes	Coleman Production 608	3/6	82	667	955	-0.8	52	95	21	0.08	0.41	56
98	Black Purebred	No	EXLR Rebound 704R	3/7	98	692	1040	2.9	46	85	23	0.47	0.06	46
99	Black Purebred	No	COLE Toolbox 89T	3/7	104	667	1042	4.1	47	87	16	0.74	0.02	46
100	Black Purebred	Yes	COLE Toolbox 89T	3/7	94	765	1050	3.8	56	100	16	0.61	0.04	49
101	Black Purebred	No	COLE Toolbox 89T	2/27	N/A	766	1056	3.3	54	100	23	0.89	0.03	48
102	Black Purebred	No	COLE Toolbox 89T	2/24	N/A	639	936	3.3	54	100	23	0.89	0.03	48
103	Black Purebred	No	COLE Toolbox 89T	2/26	N/A	580	900	3.3	54	100	23	0.89	0.03	48
104	Black Lim-Flex 50	Yes	Coleman Production 608	2/11	N/A	731	1200	0.7	59	106	31	-0.02	0.47	61
105	Black Lim-Flex 50	No	Coleman Production 608	2/10	N/A	651	1086	0.7	59	106	31	-0.02	0.47	61
106	Black Lim-Flex 50	Yes	Coleman Production 608	2/11	N/A	665	1126	0.7	59	106	31	-0.02	0.47	61
107	Black Lim-Flex 50	Yes	Coleman Production 608	2/15	N/A	625	1062	0.7	59	106	31	-0.02	0.47	61
108	Black Purebred	Yes	COLE Black Tank 24P	2/22	N/A	690	1010	2.6	46	83	22	0.34	0.05	46
110	Black Purebred	Yes	HC Final Time 407	2/23	N/A	727	1192	4.0	46	89	23	0.44	0.08	47
111	Black Purebred	No	HC Final Time 407	2/20	N/A	674	1046	4.0	46	89	23	0.44	0.08	47
112	Black Purebred	No	HC Final Time 407	2/24	N/A	694	1066	4.0	46	89	23	0.44	0.08	47
113	Black Purebred	No	Carrousels Pure Power	3/4	N/A	789	1154	3.6	49	92	18	0.56	-0.02	44
114	Black Purebred	Yes	Carrousels Pure Power	2/21	N/A	712	1044	3.6	49	92	18	0.56	-0.02	44
115	Black Purebred	Yes	COLE Sudden Impact 50S	2/17	N/A	563	1004	4.1	58	106	27	0.74	0.04	49
116	Black Purebred	No	AUTO Dollar General 122R	2/21	N/A	688	1100	2.0	55	104	31	0.41	0.15	51
117	Black Purebred	Yes	AUTO Dollar General 122R	2/22	N/A	629	1032	2.0	55	104	31	0.41	0.15	51
118	Black Purebred	Yes	COLE First Down 46D	2/16	N/A	589	1042	0.8	30	68	25	0.25	0.03	40
125	Black Purebred	Yes	COLE Toolbox 89T	3/7	88	666	1010	3.0	47	84	21	0.66	0.03	46
126	Black Lim-Flex 75	No	COLE 132T	3/7	76	658	944	1.9	37	73	24	-0.04	0.10	43
127	Black Purebred	No	COLE Toolbox 89T	3/8	80	744	995	2.1	50	91	20	0.69	0.01	46
128	Black Purebred	No	Wulfs Nasa 1212N	3/8	76	682	1000	2.8	53	94	27	0.32	0.05	47
129	Black Purebred	Yes	Carrousels Pure Power	3/8	84	671	990	2.1	42	82	13	0.41	-0.10	39
130	Black Purebred	Yes	EXLR Rebound 704R	3/8	86	710	1090	0.7	46	90	26	0.59	0.00	44
131	Red Purebred	No	Carrousels Pure Power	3/8	88	734	1054	3.5	51	91	15	0.59	-0.12	42
132	Black Purebred	Yes	COLE 132T	3/9	64	698	1002	-0.1	43	78	24	0.01	0.16	48
133	Black Lim-Flex 50	No	Coleman Production 608	3/9	76	654	1004	-0.1	55	96	15	-0.07	0.43	58
135	Black Purebred	No	COLE Sudden Impact 50S	3/10	72	716	1055	0.3	48	93	23	0.66	-0.04	44
136	Black Lim-Flex 50	Yes	Coleman Production 608	3/10	80	731	1072	0.2	64	112	23	0.12	0.50	63
141	Black Purebred	No	Carrousels Pure Power	3/11	82	715	1020	2.7	47	88	14	0.56	-0.08	42

Bull #	Color & Percent Limousin	Homozygous Black	Sire	Birth Date	Birth Weight	205 Day Weight	1/22/10 Weight	Birth EPD	WW EPD	YW EPD	Milk EPD	REA EPD	MARB EPD	\$MTI EPD
144	Black Lim-Flex 50	Yes	Coleman Production 608	3/12	92	966	1420	2.2	78	129	34	-0.14	0.46	67
146	Black Purebred	Yes	COLE Toolbox 89T	3/13	88	706	996	1.4	43	81	25	0.66	-0.01	43
147	Black Purebred	No	COLE Sudden Impact 50S	3/13	86	788	980	3.6	64	112	22	0.80	-0.05	48
148	Black Lim-Flex 50	No	Coleman Production 608	3/13	72	685	986	-0.7	56	98	24	0.05	0.38	57
150	Black Lim-Flex 50	No	Coleman Production 608	3/14	94	804	1084	1.1	63	110	27	-0.12	0.41	61
151	Black Purebred	Yes	EXLR Rebound 704R	3/14	86	775	1250	2.1	54	92	26	0.59	0.02	47
152	Black Purebred	Yes	COLE Sudden Impact 50S	3/14	86	727	1012	3.2	53	97	31	0.77	0.00	46
153	Black Lim-Flex 50	Yes	Coleman Production 608	3/15	84	685	1028	-0.3	51	95	23	-0.11	0.47	59
155	Black Purebred	No	COLE Sudden Impact 50S	3/16	82	730	1018	2.6	50	90	23	0.59	0.01	45
157	Black Purebred	Yes	COLE Sudden Impact 50S	3/17	90	657	938	4.6	52	97	12	0.69	-0.01	46
158	Black Purebred	No	EXLR Rebound 704R	3/17	84	726	948	2.2	54	93	15	0.40	-0.01	45
159	Black Purebred	Yes	COLE Toolbox 89T	3/18	88	712	986	3.0	51	90	15	0.53	0.02	47
161	Black Lim-Flex 50	Yes	Coleman Production 608	3/19	76	773	1046	-0.4	65	110	21	0.04	0.43	62
162	Black Lim-Flex 50	No	Coleman Production 608	3/19	86	808	1106	1.7	71	120	26	-0.06	0.40	62
165	Black Purebred	Yes	COLE First Down 46D	3/21	88	766	1010	3.7	49	90	24	0.15	0.04	45
166	Black Lim-Flex 50	No	Coleman Production 608	3/21	80	705	1072	-0.8	50	94	30	-0.04	0.42	57
169	Black Lim-Flex 50	No	Coleman Production 608	3/21	76	790	1090	-1.4	59	99	28	0.02	0.41	60
170	Black Lim-Flex 50	Yes	Coleman Production 608	3/22	68	663	990	-2.4	44	86	24	-0.14	0.42	55
171	Black Lim-Flex 50	No	Coleman Production 608	3/23	68	734	1098	-1.7	56	100	22	0.04	0.40	58
172	Red Purebred	No	HC Final Time 407	3/23	92	702	992	5.2	51	92	12	0.39	0.10	49
177	Black Purebred	No	COLE 132T	3/26	82	698	995	4.1	51	88	24	0.47	-0.02	45
182	Black Purebred	Yes	EXLR Rebound 704R	3/27	92	806	1112	4.0	64	108	21	0.69	0.01	50
183	Black Lim-Flex 50	No	Coleman Production 608	3/28	94	774	1078	3.3	70	118	23	0.01	0.33	60
185	Black Lim-Flex 50	No	Coleman Production 608	3/31	82	644	946	-0.2	55	97	15	-0.04	0.43	59
187	Black Purebred	No	Carrousel Prime Time	4/1	86	662	938	1.6	35	75	21	0.12	-0.04	40
188	Black Lim-Flex 50	Yes	Coleman Production 608	4/2	76	787	1024	0.5	65	112	26	0.02	0.41	61
190	Black Lim-Flex 50	Yes	COLE First Down 46D	4/3	84	755	1096	-0.4	44	87	26	-0.15	0.26	50
191	Black Lim-Flex 50	No	Lewis Regency	4/4	74	742	972	-1.7	39	75	29	0.06	0.30	51
197	Black Lim-Flex 50	Yes	Coleman Production 608	4/9	78	760	1002	-0.5	55	98	26	-0.08	0.40	58
199	Black Lim-Flex 50	No	Lewis Regency	4/12	74	656	845	-4.0	29	63	31	-0.14	0.36	49
202	Black Lim-Flex 50	Yes	Lewis Regency	4/15	86	745	902	-1.3	38	76	29	-0.10	0.33	52
205	Black Lim-Flex 50	No	Coleman Production 608	4/19	86	808	905	1.1	64	112	26	-0.08	0.41	61

# Coleman Limousin Heifers



**COLE Miss Production 921W**



**COLE Miss Production 928W**

Check our website for more heifer pictures.

[colemantilimousinranch.com](http://colemantilimousinranch.com)

Heifer #	Color & Percent Limousin	Sire	Birth Date	Birth Weight	205 Day Weight	1/23/10 Weight	Birth EPD	WW EPD	YW EPD	Milk EPD	REA EPD	MARB EPD	SMTI EPD
3	Black Lim-Flex 50	Coleman Production 608	2/12	72	685	1010	-0.5	57	101	29	-0.17	0.42	58
5	Black Lim-Flex 50	Coleman Production 608	2/12	74	628	869	-0.3	57	102	19	-0.12	0.42	59
11	Black Lim-Flex 50	Coleman Production 608	2/15	86	673	978	2.6	70	117	17	0.05	0.39	61
20	Black Purebred	COLE Toolbox 89T	2/17	82	723	967	3.0	56	99	25	0.88	-0.05	46
21	Black Lim-Flex 50	Coleman Production 608	2/17	76	662	903	1.4	64	108	19	0.08	0.38	60
23	Black Purebred	AUTO Dollar General 122R	2/17	62	578	804	0.5	53	98	26	0.52	0.09	48
26	Black Lim-Flex 50	Coleman Production 608	2/18	80	724	1006	2.4	68	113	23	0.05	0.39	61
27	Black Lim-Flex 50	Coleman Production 608	2/18	76	614	918	-1.5	47	84	23	-0.17	0.38	55
28	Black Lim-Flex 50	Coleman Production 608	2/18	82	679	938	2.1	64	110	20	-0.07	0.39	60
32	Black Purebred	AUTO Dollar General 122R	2/19	64	654	880	2.1	63	112	23	0.43	0.11	52
38	Black Lim-Flex 50	Coleman Production 608	2/21	84	687	1026	2.2	64	107	26	0.06	0.42	61
49	Black Purebred	COLE Toolbox 89T	2/21	66	613	875	2.0	46	81	18	0.72	0.01	45
54	Black Lim-Flex 50	Coleman Production 608	2/24	74	610	878	-0.1	51	95	23	-0.17	0.40	57
57	Black Lim-Flex 50	Coleman Production 608	2/24	78	725	1000	1.4	68	117	28	0.18	0.40	62
67	Black Purebred	COLE Sudden Impact 50S	2/26	86	655	938	3.1	55	100	24	0.6	-0.01	46
81	Black Lim-Flex 50	Coleman Production 608	2/28	84	633	917	1.4	54	98	24	-0.12	0.40	58
86	Black Lim-Flex 50	Coleman Production 608	3/2	72	650	905	0.4	63	105	19	-0.04	0.38	59
88	Black Lim-Flex 50	Coleman Production 608	3/2	72	650	925	-0.5	58	101	28	-0.09	0.43	59
89	Black Purebred	COLE Toolbox 89T	3/2	82	661	850	2.9	51	89	20	0.74	0.01	46
94	Black Purebred	COLE Toolbox 89T	3/4	88	699	953	5.1	58	101	19	0.66	-0.02	47
96	Black Purebred	HC Final Time 407	3/5	86	668	1003	4.3	54	96	13	0.4	-0.02	45
101	Black Purebred	COLE Toolbox 89T	2/21	N/A	678	862	3.3	54	100	23	0.89	0.03	48
132	Black Purebred	COLE Sudden Impact 50S	3/10	70	713	913	2.1	55	97	28	0.73	-0.02	47
133	Black Purebred	COLE Toolbox 89T	3/10	76	615	848	1.1	43	81	23	0.59	0.06	45
135	Black Lim-Flex 75	COLE Sudden Impact 50S	3/11	84	720	1005	2.7	56	100	29	0.69	-0.11	43

## PERCENTILE BREAKDOWN 2008-2010 BORN CALVES

Upper Percentile Group	Calving Ease Direct	Birth Weight	Weaning Weight	Yearling Weight	Milking Ability	Calving Ease Maternal	Scrotal Circum.	Stayability	Docility	Carcass Weight	Ribeye Area	Yield Grade	Marbling Score	\$MTI
1%	19	-3.3	63	113	34	11	1.1	26	33	52	0.89	-0.25	0.50	61
2%	17	-2.6	61	109	33	10	1.0	25	31	48	0.84	-0.23	0.42	59
3%	16	-2.3	59	107	32	9	0.9	24	30	45	0.81	-0.22	0.39	57
4%	15	-2.0	58	105	31	9	0.9	24	29	43	0.79	-0.21	0.35	55
5%	15	-1.8	57	103	30	9	0.9	23	28	42	0.77	-0.20	0.32	54
10%	13	-1.0	54	98	28	7	0.8	22	26	37	0.71	-0.18	0.22	51
20%	11	-0.1	50	92	26	6	0.6	21	22	31	0.62	-0.14	0.09	48
30%	9	0.6	47	87	24	5	0.5	20	19	27	0.55	-0.11	0.04	46
40%	8	1.2	45	83	23	4	0.4	18	17	23	0.49	-0.09	0.00	45
50%	7	1.6	42	80	21	3	0.4	17	15	20	0.42	-0.06	-0.02	44
60%	6	2.1	41	76	20	2	0.3	16	13	16	0.36	-0.02	-0.05	43
70%	6	2.5	38	73	19	2	0.2	15	11	13	0.27	0.02	-0.07	42
80%	5	3.0	36	69	17	1	0.1	14	9	9	0.13	0.10	-0.09	40
90%	3	3.8	32	64	15	0	0.0	13	6	3	-0.06	0.22	-0.12	39

## PERCENTILE BREAKDOWN 2008-2010 BORN LIM-FLEX CALVES

Upper Percentile Group	Calving Ease Direct	Birth Weight	Weaning Weight	Yearling Weight	Milking Ability	Calving Ease Maternal	Scrotal Circum.	Stayability	Docility	Carcass Weight	Ribeye Area	Yield Grade	Marbling Score	\$MTI
1%	15	-3.9	66	119	37	8	0.9	24	28	56	0.59	-0.13	0.60	64
2%	14	-3.4	63	115	36	7	0.9	24	26	52	0.51	-0.10	0.55	62
3%	14	-3.0	62	112	35	6	0.8	23	25	50	0.48	-0.07	0.53	62
4%	13	-2.8	60	111	34	6	0.8	23	25	47	0.45	-0.06	0.50	61
5%	13	-2.6	59	110	33	6	0.8	22	24	46	0.42	-0.04	0.47	60
10%	12	-2.0	56	105	31	5	0.7	22	21	39	0.34	0.00	0.40	58
20%	10	-1.2	52	99	29	4	0.5	19	18	32	0.21	0.07	0.32	54
30%	9	-0.7	50	94	28	3	0.5	18	15	27	0.13	0.11	0.26	52
40%	8	-0.2	47	91	26	2	0.4	17	13	23	0.07	0.15	0.22	51
50%	8	0.2	45	87	25	2	0.3	16	11	20	0.00	0.18	0.18	49
60%	7	0.6	43	84	24	1	0.3	15	10	17	-0.06	0.22	0.14	48
70%	6	1.0	41	80	22	1	0.2	14	8	14	-0.12	0.26	0.10	46
80%	5	1.5	39	77	21	0	0.1	11	7	10	-0.19	0.32	0.05	44
90%	4	2.2	35	71	19	-1	0.0	10	4	5	-0.29	0.39	-0.02	42



**Please send me your 2010 Coleman Limousin Ranch 32nd Annual Production Sale Catalog.**

Name \_\_\_\_\_  
 Address \_\_\_\_\_  
 Phone \_\_\_\_\_

### SEMEN SPECIALS

I am interested in semen from your herd sires:

COLE First Down Clone – undoubtedly one of the most influential sires in the breed's history. He is a multi-trait leader and is the breed's #1 ranked sire for stayability. First Down is the sire of the most Focus Dams in the Limousin breed. The success of a program is dependent on cows that produce and stay in the herd.

Other Coleman Herd Sires:     COLE Sudden Impact 50S     COLE Windfall 144W     COLE Toolbox 89T     Coleman Production 608

Ask us for a special price on these outstanding herd sires. If you'd like to contact us or visit the ranch, call us at 406/644-2300 or 406/644-2707.

Return this form to: **Coleman Limousin Ranch, Larry & Trent Coleman, 53717 Gallagher Road, Charlo, MT 59824**



## COLEMAN LIMOUSIN RANCH

Larry & Anita • Trent & Melissa

53717 Gallagher Road  
Charlo, MT 59824

RETURN SERVICE REQUESTED

# Coleman Limousin Ranch 32nd Annual Production Sale Tuesday, April 6, 2010

**Monday, April 5, 2010**

All day cattle viewing

6:30 pm – Complimentary Dinner

**Tuesday, April 6, 2010**

11:30 am – Lunch

1:00 pm – Coleman Limousin Ranch  
32nd Annual Production Sale

