

Coleman Limousin Ranch

34th Annual Production Sale

Missoula Livestock Exchange
Missoula, Montana
Monday, April 2, 2012 – 1 p.m.



Selling 130 Lots
Limousin and Lim-Flex
Many Homozygous Black and Polled Lots
110 Bulls (many 1/2 and 3/4 brothers)
75 yearling Lim-Flex bulls, 35 yearling purebred bulls
20 Open Yearling Heifers

SALE MANAGEMENT



SEEDSTOCK CONSULTANTS SPECIALIZED SALES
2300 Monument Avenue • Richmond, VA 23220
Ph: 804/353-2220 • Fax 804/353-2221
Keith Kisse • Cell 817/821-6263
e-mail: kkseedstock@comcast.net

AUCTIONEER

C.K. "Sonny" Booth

SALE DAY PHONE

(406) 728-3052

SALE HEADQUARTERS

Days Inn (406) 721-9776

The airport is located 3 miles from the sale site.



Watch and bid with
DV Auction's
"real-time" internet
bidding service



For more information and a sale catalog:

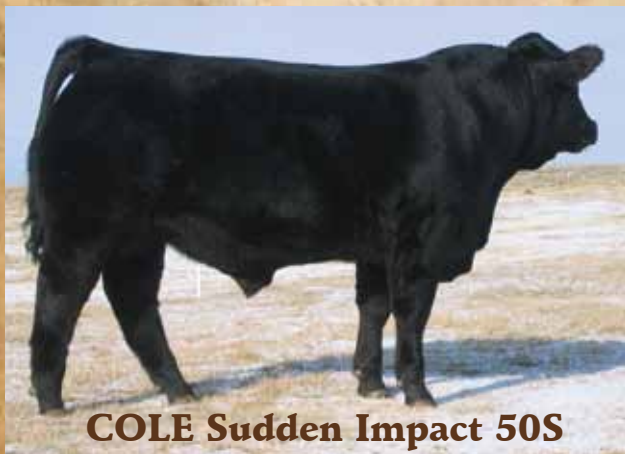
53717 Gallagher Road
Charlo, MT 59824

Larry & Anita Coleman
(406) 644-2300

Trent & Melissa Coleman
(406) 644-2707

website: colemanlimousinranch.com

Coleman Limousin Ranch Herd Sires



Sire: COLE Black Tank 24P
Dam: COLE 7100G (First Down)
Born: 02-23-06

Homozygous Black, Polled
EPD's - CED:1, BW:6.2, WW:72, YW:120, MA:24, CEM:5,
SC:1.4, DOC:1, CW:71, REA:0.96, YG:-0.11, MARB:-0.09, \$MTI:49

Sudden Impact was the lead bull in our 2007 People's Choice Champion Carload and the top seller in our 2007 sale. He was one of the most powerful Limousin bulls to ever sell. He ranks in the top 1% for weaning weight, yearling weight and scrotal. Sudden Impact also ranks in the top 5% for ribeye and \$MTI. His calves excel in muscle and performance.

Semen: \$30 per unit

COLE Sudden Impact 50S

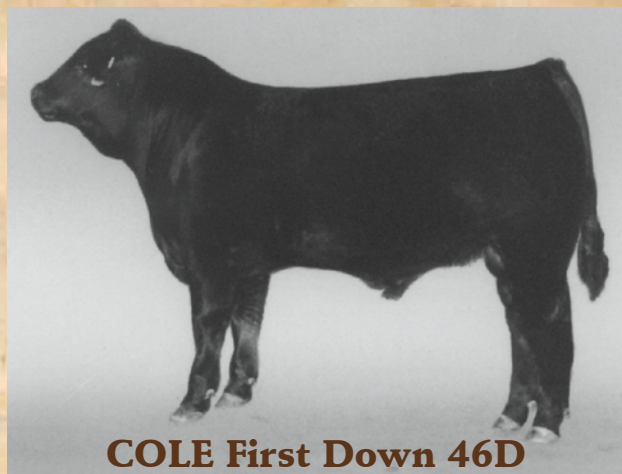
Sire: LKCC Tomahawks Touchdown
Born: 03-20-94

Homozygous Black, Homozygous Polled

EPD's - CED:7, BW:1.1, WW:44, YW:92, MA:23, CEM:9, SC:1.2,
DOC:28, CW:20, REA:0.07, YG:0.15, MARB:0.10, \$MTI:46

First Down is definitely a proven sire that will change a program. He is a leader in many traits. Being the #1 ranked proven sire for stayability makes him a very elite and profitable bull. Cows that stay in the herd and produce consistently contribute to the success of a program. First Down has made a mark on our program. He would be an excellent choice for producing Lim-Flex heifers and also to be used in purebred herds.

Semen: \$30 per unit



COLE First Down 46D



Sire: Coleman Production 608
Dam: COLE Miss First Down 6162S
Born: 03-12-09

Homozygous Black, Polled Lim-Flex 50

EPD's - CED:6, BW:2.3, WW:75, YW:138, MA:34, CEM:0, SC:0.1,
DOC:15, CW:73, REA:0.18, YG:0.70, MARB:0.68, \$MTI:72

Windfall was the lead bull in our 2010 Reserve Champion Lim-Flex Pen and top seller in our 2010 Sale (sold to Australia). He scanned a 16.74 inch ribeye and 5.02% IMF. Windfall ranks in the top 1% for weaning weight, yearling weight and \$MTI. He also ranks in the top 5% for milk and marbling. Windfall has tremendous thickness, depth, growth and carcass traits..

Semen: \$30 per unit

COLE Windfall 144W

Sire: Gar Precision 1680
Dam: Coleman Blackcap 211 (Leachman Right Time)
Born: 01-19-06

Homozygous Black, Homozygous Polled

EPD's - CED:10, BW:-2.0, WW:70, YW:133, MA:19, CEM:0, SC:-0.2,
DOC:14, CW:61, REA:-0.78, YG:1.03, MARB:1.07, \$MTI:82

*Limousin crossover EPD'S

Production is a tremendous Angus bull that we added to our program to produce Lim-Flex cattle. He is a very deep, thick-made Angus bull that scanned a 15 inch ribeye and a 5.32 IMF score. He has tremendous growth, carcass and maternal value. His calves are moderate, deep and thick. Production sired the bulls in our 2009 and 2010 Reserve Champion Lim-Flex pen. Coleman Production tested negative for AM and hydro.

Semen: \$30 per unit



Coleman Production 608

2012 Sale Highlights



COLE Young Gun 10Y

Sire: COLE Windfall 144W
Dam: COLE 7112T (Magnum)
Born: 02-12-11
BW: 84 Adj WW: 891

Homozygous Black,
Double Polled, 75% Lim-Flex
EPD's - CED:8 BW:2.6 WW:77
YW:131 MA:29 SC:0.4 REA:.30
MARB:.39 \$MTI:64

The lead bull in our Lim-Flex Pen of 3 at Denver



COLE Yokel 86Y

Sire: COLE Sudden Impact 50S
Dam: COLE 242M (Guardian)
Born: 03-03-11
BW:94 Adj WW: 783

Homozygous Black,
Homozygous Polled, Purebred
EPD's - CED:6 BW:3.3 WW:60
YW:104 MA:23 SC:1.0 DC:12
REA:0.72 MARB:-0.14, \$MTI:44

The lead bull in our carload at Denver

Bull #	Color & Percent Limousin	Homozygous Black	Sire	Birth Date	Birth Weight	205 Day Weight	1/25/12 Weight	Birth EPD	WW EPD	YW EPD	Milk EPD	REA EPD	MARB EPD	\$MTI EPD
2	Black Purebred	No	HC Overtime 972	2/7	70	683	1144	1.3	41	81	21	0.49	0.04	45
3	Black Purebred	No	HC Overtime 972	2/7	70	656	890	1.3	41	81	21	0.49	0.04	45
5	Black Lim-Flex 75	Yes	COLE Windfall 144W	2/9	94	665	950	3.7	56	106	19	0.19	0.35	57
6	Black Lim-Flex 75	Yes	RUNL Stetson 850S	2/10	72	701	1074	-1.3	63	119	21	0.04	0.43	62
7	Black Lim-Flex 75	Yes	COLE Sudden Impact 50S	2/11	96	736	1185	3.6	54	96	32	0.43	0.03	45
8	Black Purebred	Yes	COLE Sudden Impact 50S	2/11	92	766	1268	5.4	70	113	21	0.67	-0.05	49
9	Black Purebred	No	COLE Sudden Impact 50S	2/12	86	634	1096	2.6	48	89	21	0.44	-0.05	42
10	Black Lim-Flex 75	Yes	COLE Windfall 144W	2/12	82	889	1370	2.6	77	131	29	0.30	0.39	64
11	Black Lim-Flex 75	Yes	RUNL Stetson 850S	2/13	62	603	926	-4.0	44	94	19	0.08	0.28	52
12	Black Lim-Flex 50	Yes	Coleman Production 608	2/13	74	656	1062	-2.5	46	91	14	-0.34	0.47	57
15	Black Lim-Flex 50	Yes	Coleman Production 608	2/15	78	704	1145	-1.6	48	96	24	-0.26	0.56	61
16	Black Lim-Flex 75	Yes	COLE Windfall 144W	2/15	84	699	1038	1.6	57	104	27	0.25	0.34	57
17	Black Purebred	Yes	COLE Sudden Impact 50S	2/16	86	763	1240	2.9	58	101	26	0.54	-0.06	45
18	Black Lim-Flex 50	No	Coleman Production 608	2/16	76	630	1058	-1.9	44	92	17	-0.32	0.59	61
20	Black Lim-Flex 75	Yes	RUNL Stetson 850S	2/16	84	737	1122	0.8	74	133	24	0.17	0.35	62
22	Black Purebred	Yes	COLE Sudden Impact 50S	2/17	102	589	974	4.7	54	100	19	0.89	-0.12	42
23	Black Lim-Flex 75	Yes	COLE Windfall 144W	2/17	72	556	916	-1.5	42	90	21	0.36	0.34	53
24	Black Lim-Flex 50	Yes	Coleman Production 608	2/17	86	733	1116	1.0	62	109	16	-0.16	0.51	63
25	Black Lim-Flex 75	No	COLE Windfall 144W	2/18	78	786	1272	0.9	61	113	31	0.31	0.34	58
27	Black Lim-Flex 50	Yes	Coleman Production 608	2/19	82	722	1140	-1.1	56	108	20	-0.18	0.52	52
28	Black Lim-Flex 75	No	COLE First Down 46D	2/19	78	660	1050	0.0	46	93	19	-0.06	0.31	52
30	Black Lim-Flex 50	Yes	Coleman Production 608	2/20	84	655	1034	0.3	57	107	11	-0.32	0.54	62
31	Black Lim-Flex 50	Yes	Coleman Production 608	2/20	88	729	1118	0.5	63	117	15	-0.25	0.52	64
32	Black Lim-Flex 50	No	Coleman Production 608	2/21	82	569	954	-0.9	46	91	13	-0.39	0.49	57
36	Black Lim-Flex 75	Yes	COLE First Down 46D	2/21	80	672	856	0.7	52	101	28	-0.14	0.32	54
37	Black Lim-Flex 75	Yes	COLE Windfall 144W	2/22	88	787	1234	3.0	68	116	29	0.35	0.33	59
38	Black Lim-Flex 50	Yes	Coleman Production 608	2/22	76	691	1106	-1.3	55	102	14	-0.32	0.53	61

Bull #	Color & Percent Limousin	Homozygous Black	Sire	Birth Date	Birth Weight	205 Day Weight	1/25/12 Weight	Birth EPD	WW EPD	YW EPD	Milk EPD	REA EPD	MARB EPD	\$MTI EPD
41	Black Lim-Flex 50	Yes	Coleman Production 608	2/23	92	754	1172	1.7	57	114	30	-0.07	0.51	62
42	Black Lim-Flex 75	Yes	COLE Windfall 144W	2/23	72	604	950	-0.5	50	96	25	0.32	0.35	54
43	Black Lim-Flex 50	Yes	Coleman Production 608	2/23	86	766	1168	1.1	55	107	20	0.29	0.57	64
45	Black Lim-Flex 75	Yes	RUNL Stetson 850S	2/23	74	598	904	-2.1	57	111	19	0.20	0.27	55
48	Black Purebred	No	COLE Sudden Impact 50S	2/24	94	670	1046	3.6	52	94	20	0.55	-0.05	44
50	Black Lim-Flex 50	Yes	Coleman Production 608	2/24	84	867	1300	-1.0	65	117	30	-0.12	0.53	65
52	Black Lim-Flex 50	No	Coleman Production 608	2/25	84	696	1124	0.5	62	114	14	-0.19	0.55	65
53	Black Lim-Flex 75	Yes	RUNL Stetson 850S	2/25	86	656	964	-2.0	48	98	16	0.12	0.19	50
54	Black Purebred	Yes	COLE Sudden Impact 50S	2/26	82	720	1104	2.4	51	92	28	0.47	-0.02	45
56	Black Lim-Flex 75	Yes	COLE Production 26U	2/26	82	740	1020	0.6	56	108	24	0.15	0.28	55
57	Black Lim-Flex 75	Yes	RUNL Stetson 850S	2/26	72	802	1130	-2.3	65	119	21	0.07	0.48	64
59	Black Purebred	Yes	COLE Sudden Impact 50S	2/26	72	595	1042	2.7	41	80	22	0.46	-0.05	41
61	Black Lim-Flex 50	No	Coleman Production 608	2/26	82	687	1030	-0.3	54	98	20	-0.11	0.51	61
62	Black Lim-Flex 75	Yes	RUNL Stetson 850S	2/26	76	620	910	-1.3	60	115	21	0.15	0.38	59
63	Black Purebred	No	RUNL Stetson 850S	2/26	90	730	1056	1.3	63	112	20	0.33	0.08	52
64	Black Lim-Flex 50	Yes	Coleman Production 608	2/27	82	657	1068	-1.1	49	96	23	-0.19	0.54	61
65	Black Lim-Flex 50	No	COLE First Down 46D	2/27	88	742	1130	-0.5	44	87	23	-0.21	0.24	49
66	Black Purebred	Yes	COLE Sudden Impact 50S	2/27	98	757	1200	4.3	61	103	24	0.69	-0.06	47
67	Black Lim-Flex 50	Yes	Coleman Production 608	2/27	84	721	1000	-1.0	54	99	20	-0.29	0.53	61
68	Black Lim-Flex 75	Yes	RUNL Stetson 850S	2/27	82	674	952	-0.2	62	117	16	0.14	0.32	58
69	Black Lim-Flex 69	No	COLE Production 26U	2/27	74	644	966	-0.9	46	94	18	0.06	0.35	54
70	Black Lim-Flex 50	No	Coleman Production 608	2/28	78	683	956	-1.6	45	86	18	-0.26	0.46	57
72	Red Purebred	No	HC Overtime 972	2/28	92	607	964	2.1	43	82	13	0.57	0.07	47
73	Black Lim-Flex 75	No	COLE Windfall 144W	2/28	88	799	1264	3.5	72	124	21	0.26	0.31	60
77	Black Lim-Flex 50	Yes	Coleman Production 608	2/28	80	684	1046	-1.2	52	96	16	-0.24	0.51	60
78	Black Purebred	Yes	HC Overtime 972	3/1	88	626	904	0.2	30	64	19	0.33	0.08	43
79	Black Lim-Flex 50	Yes	Coleman Production 608	3/1	92	671	960	1.3	60	108	14	-0.25	0.50	62

Coleman Limousin Purebred Bulls



COLE Yankee 08Y

02/11/11 BW: 92 Adj WW: 767
S: COLE Sudden Impact 50S
CED:4 BW:5.4 WW:70 YW:113 MA:21 SC:1.4
DC:0 RE:.67 MS:-.05 \$MTI:49
Homozygous black, double polled.



COLE Yacht 138Y

03/16/11 BW: 88 Adj WW: 777
S: RUNL Stetson 850S
CED:11 BW:1.6 WW:72 YW:126 MA:23 SC:1.4
DC:21 RE:.52 MS:.00 \$MTI:52
Black, double polled.



COLE Yardstick 111Y

02/28/11 BW: 88 Adj WW: 859
S: COLE First Down 46D
CED:9 BW:0.9 WW:48 YW:71 MA:18 SC:0.3
RE:.17 MS:.08 \$MTI:43
Homozygous black, double polled.



COLE Yodel 99Y

03/07/11 BW: 98 Adj WW: 813
S: COLE Sudden Impact 50S
CED:3 BW:6.3 WW:73 YW:118 MA:23 SC:1.2
RE:.79 MS:-.07 \$MTI:50
Homozygous black, double polled.



COLE Youth 66Y

02/27/11 BW: 98 Adj WW: 756
S: COLE Sudden Impact 50S
CED:4 BW:4.3 WW:61 YW:103 MA:24 SC:1.0
DC:12 RE:.69 MS:-.06 \$MTI:47
Homozygous black, horned.



COLE Yoachum 17Y

02/16/11 BW: 87 Adj WW: 764
S: COLE Sudden Impact 50S
CED:6 BW:2.9 WW:58 YW:101 MA:26 SC:1.1
DC:8 RE:.54 MS:-.06 \$MTI:45
Homozygous black, double polled.

Coleman Limousin Lim-Flex Bulls



COLE Yukon 82Y

03/02/11 BW: 94 Adj WW: 955
S: Coleman Production 608
CED:7 BW:3.1 WW:78 YW:130 MA:26 SC:0.3
DC:9 RE:-.32 MS:.57 \$MTI:70

Homozygous black, double polled, Lim-Flex 50.



COLE Yell 101Y

02/21/11 BW: 90 Adj WW: 859
S: COLE Windfall 144W
CED:4 BW:2.6 WW:72 YW:116 MA:36 SC:0.6
RE:.38 MS:.29 \$MTI:57

Homozygous black, homozygous polled, Lim-Flex 75.



COLE Yannick 73Y

02/28/11 BW: 88 Adj WW: 799
S: COLE Windfall 144W
CED:5 BW:3.5 WW:72 YW:124 MA:21 SC:0.2
RE:.26 MS:.31 \$MTI:60

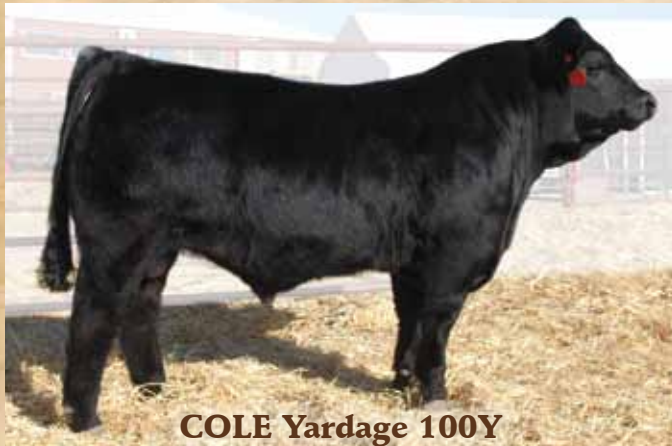
Double black, double polled, Lim-Flex 75.



COLE Yale 84Y

03/03/11 BW: 92 Adj WW: 795
S: COLE Windfall 144W
CED:3 BW:3.9 WW:68 YW:121 MA:31 SC:0.4
RE:.27 MS:.30 \$MTI:59

Black, horned, Lim-Flex 75.



COLE Yardage 100Y

02/22/11 BW: 86 Adj WW: 853
S: COLE Windfall 144W
CED:4 BW:2.0 WW:71 YW:116 MA:36 SC:0.6
RE:.38 MS:.29 \$MTI:57

Double black, homozygous polled, Lim-Flex 75.



COLE Yosemite 25Y

02/18/11 BW: 78 Adj WW: 785
S: COLE Windfall 144W
CED:8 BW:0.9 WW:61 YW:113 MA:31 SC:0.4
RE:.31 MS:.34 \$MTI:58

Double black, homozygous polled, Lim-Flex 75.

Bull #	Color & Percent Limousin	Homozygous Black	Sire	Birth Date	Birth Weight	205 Day Weight	1/25/12 Weight	Birth EPD	WW EPD	YW EPD	Milk EPD	REA EPD	MARB EPD	\$MTI EPD
80	Black Lim-Flex 75	Yes	COLE Windfall 144W	3/1	86	608	980	-0.3	44	89	24	0.23	0.34	53
81	Black Lim-Flex 50	No	Coleman Production 608	3/1	92	693	1048	-0.3	53	98	22	-0.18	0.53	62
82	Black Lim-Flex 50	Yes	Coleman Production 608	3/2	94	956	1460	3.1	78	130	26	-0.32	0.57	70
83	Black Lim-Flex 75	Yes	COLE Windfall 144W	3/3	88	723	1046	1.3	57	107	27	0.51	0.37	59
84	Black Lim-Flex 75	No	COLE Windfall 144W	3/3	92	798	1180	3.9	68	121	31	0.27	0.30	59
86	Black Purebred	Yes	COLE Sudden Impact 50S	3/3	94	784	1246	3.3	60	104	23	0.72	-0.14	44
87	Red Purebred	No	HC Overtime 972	3/3	84	707	1040	1.2	48	86	16	0.38	0.04	46
88	Black Lim-Flex 50	No	Coleman Production 608	3/3	82	645	1034	-1.0	47	91	16	-0.31	0.52	59
89	Black Purebred	Yes	COLE Sudden Impact 50S	3/3	98	756	1185	6.3	66	108	21	0.69	-0.04	49
92	Black Lim-Flex 75	No	COLE Windfall 144W	3/4	90	930	1220	3.0	75	125	38	0.20	0.35	62
93	Black Purebred	Yes	COLE First Down 46D	3/5	82	619	920	2.6	49	94	24	0.60	0.01	45
94	Black Lim-Flex 75	Yes	RUNL Stetson 850S	3/5	86	737	1090	-1.0	53	103	29	0.26	0.25	54
96	Black Lim-Flex 50	No	Coleman Production 608	3/6	84	684	990	0.7	58	106	17	-0.16	0.50	61
99	Black Purebred	Yes	COLE Sudden Impact 50S	3/7	98	813	1240	6.3	73	118	23	0.79	-0.07	50
100	Black Lim-Flex 75	No	COLE Windfall 144W	2/22	86	853	1312	2.0	71	116	36	0.38	0.29	57
101	Black Lim-Flex 75	Yes	COLE Windfall 144W	2/21	90	859	1202	2.6	72	116	36	0.38	0.29	57
102	Black Lim-Flex 75	Yes	COLE Windfall 144W	2/16	84	732	1184	1.8	60	116	26	0.28	0.29	57
104	Black Purebred	Yes	RUNL Stetson 850S	2/21	82	783	1140	-0.5	55	107	27	0.50	0.13	51
105	Black Purebred	Yes	RUNL Stetson 850S	2/28	88	717	1052	0.3	49	107	27	0.50	0.13	51
106	Black Lim-Flex 50	Yes	Coleman Production 608	2/20	86	724	1090	1.4	66	118	25	-0.08	0.54	64
107	Black Lim-Flex 50	Yes	Coleman Production 608	2/17	86	713	1006	1.4	65	118	25	-0.08	0.54	64
108	Black Lim-Flex 50	No	Coleman Production 608	2/19	78	648	970	0.3	59	118	25	-0.08	0.54	64
109	Black Lim-Flex 50	Yes	Coleman Production 608	2/19	82	646	952	0.9	59	118	25	-0.08	0.54	64
110	Black Lim-Flex 50	Yes	Coleman Production 608	2/20	86	658	1010	0.5	56	112	26	-0.17	0.62	65
111	Black Purebred	No	COLE First Down 46D	2/28	88	859	1300	0.9	48	71	18	0.17	0.08	43
112	Black Purebred	Yes	COLE First Down 46D	2/27	78	687	840	-0.5	33	71	18	0.17	0.08	43
113	Black Purebred	Yes	COLE Black Tank 24P	2/21	90	672	1008	2.2	38	83	25	0.39	0.06	46

Bull #	Color & Percent Limousin	Homozygous Black	Sire	Birth Date	Birth Weight	205 Day Weight	1/25/12 Weight	Birth EPD	WW EPD	YW EPD	Milk EPD	REA EPD	MARB EPD	\$MTI EPD
120	Black Purebred	No	COLE Sudden Impact 50S	3/7	94	619	930	3.5	49	92	26	0.70	-0.06	43
121	Black Purebred	Yes	RUNL Stetson 850S	3/7	94	575	892	-1.4	44	92	23	0.41	0.05	45
124	Black Purebred	Yes	RUNL Stetson 850S	3/8	72	748	1054	1.5	61	114	23	0.39	0.04	50
126	Black Purebred	Yes	RUNL Stetson 850S	3/11	82	581	872	1.0	53	104	16	0.74	0.04	48
128	Black Lim-Flex 50	Yes	COLE First Down 46D	3/12	80	749	1068	-1.2	44	89	29	-0.11	0.37	54
129	Black Lim-Flex 50	No	Coleman Production 608	3/13	80	804	1172	-0.3	63	115	20	-0.13	0.51	64
130	Black Lim-Flex 38	Yes	Coleman Production 608	3/13	84	709	1010	-0.7	55	105	18	-0.43	0.60	64
132	Red Purebred	No	EXLR Rebound 704R	3/14	84	781	1010	2.7	61	100	23	0.72	-0.06	46
133	Black Lim-Flex 50	No	Coleman Production 608	3/14	94	778	1112	2.8	71	130	20	-0.06	0.47	64
134	Black Purebred	Yes	COLE Utmost 15U	3/15	86	744	1042	2.0	48	84	25	0.48	-0.05	43
136	Black Lim-Flex 75	No	HC Overtime 972	3/16	88	644	852	0.2	37	77	17	0.14	0.14	45
137	Black Lim-Flex 75	No	COLE Production 26U	3/16	78	709	976	0.9	52	97	23	0.29	0.26	54
138	Black Purebred	No	RUNL Stetson 850S	3/16	88	777	1152	1.6	72	126	23	0.52	0.00	52
139	Black Purebred	Yes	COLE Sudden Impact 50S	3/10	98	737	1006	5.5	68	115	18	0.69	-0.05	48
143	Black Lim-Flex 50	No	Coleman Production 608	3/20	94	747	1012	1.1	58	111	21	-0.28	0.54	63
144	Black Purebred	No	HC Overtime 972	3/20	82	697	926	1.5	46	84	22	0.55	0.05	46
146	Black Purebred	Yes	COLE Sudden Impact 50S	3/23	104	720	1030	5.0	63	105	28	0.62	-0.05	47
147	Black Lim-Flex 75	No	COLE Production 26U	3/19	72	673	892	-0.6	44	88	21	0.11	0.20	49
150	Red Lim-Flex 75	No	COLE Production 26U	3/27	92	744	1010	1.1	52	95	25	0.15	0.27	54
151	Black Lim-Flex 50	Yes	Coleman Production 608	3/27	88	684	980	1.6	61	109	13	-0.18	0.54	64
154	Black Lim-Flex 50	Yes	Coleman Production 608	3/28	72	672	910	-1.5	51	96	14	-0.26	0.51	60
155	Black Lim-Flex 75	No	COLE Production 26U	3/28	86	780	1012	0.9	58	108	32	0.11	0.31	57
156	Black Purebred	Yes	EXLR Rebound 704R	4/2	86	798	904	1.7	63	106	18	0.29	0.04	50
159	Black Lim-Flex 50	No	Coleman Production 608	4/3	80	859	1080	-0.2	63	112	28	-0.20	0.54	65
160	Black Purebred	No	EXLR Rebound 704R	4/5	94	858	1010	2.2	65	109	33	0.62	-0.01	49
163	Black Lim-Flex 50	Yes	Coleman Production 608	4/10	82	779	900	0.6	67	118	21	-0.13	0.54	65
165	Black Lim-Flex 50	Yes	Coleman Production 608	4/13	86	779	952	0.6	62	114	27	0.02	0.56	65

Production daughters like these sell



COLE Miss Production 921W



COLE Miss Production 928W

Check our website for more heifer pictures.

colemanlimousinranch.com

Heifer #	Color & Percent Limousin	Sire	Birth Date	Birth Weight	205 Day Weight	1/24/12 Weight	Birth EPD	WW EPD	YW EPD	Milk EPD	REA EPD	MARB EPD	\$MTI EPD
8	Black Lim-Flex 50	Coleman Production 608	2/10	84	633	880	0.3	61	114	19	-0.11	0.51	63
16	Black Lim-Flex 75	RUNL Stetson 850S	2/12	60	589	840	-1.8	59	116	17	0.14	0.35	59
17	Black Lim-Flex 75	COLE Windfall 144W	2/12	84	625	840	1.8	58	107	25	0.27	0.37	58
28	Black Purebred	COLE First Down 46D	2/15	72	631	885	2.1	46	87	25	0.28	0.02	45
30	Black Purebred	HC Overtime 972	2/16	78	607	830	0.2	36	75	20	0.42	0.05	43
32	Black Lim-Flex 50	Coleman Production 608	2/16	74	558	815	-0.4	53	101	15	-0.34	0.52	60
45	Black Purebred	RUNL Stetson 850S	2/18	76	574	795	-0.8	53	100	17	0.54	0.07	49
53	Black Lim-Flex 75	RUNL Stetson 850S	2/21	74	597	820	0.3	65	124	18	0.12	0.28	58
70	Black Lim-Flex 75	COLE Windfall 144W	2/27	84	637	840	2.9	61	117	28	0.25	0.36	59
71	Black Lim-Flex 75	COLE Sudden Impact 50S	2/27	84	684	880	4.4	69	119	21	0.37	0.23	58
75	Black Lim-Flex 50	Coleman Production 608	2/28	84	741	898	0.6	59	113	34	-0.27	0.61	66
79	Black Lim-Flex 50	Coleman Production 608	3/1	84	672	910	0.6	63	114	22	-0.03	0.52	64
82	Black Lim-Flex 75	COLE Windfall 144W	3/1	82	616	800	3.3	63	114	23	0.29	0.36	59
93	Black Lim-Flex 75	HC Overtime 972	3/6	86	670	805	2.2	50	89	15	0.29	0.14	50
101	Black Lim-Flex 50	Coleman Production 608	2/17	82	664	820	1.1	61	118	25	-0.08	0.54	64

PERCENTILE BREAKDOWN 2010-2011 BORN CALVES

Upper Percentile Group	Calving Ease Direct	Birth Weight	Weaning Weight	Yearling Weight	Milking Ability	Calving Ease Maternal	Scrotal Circum.	Stayability	Docility	Carcass Weight	Ribeye Area	Yield Grade	Marbling Score	\$MTI
1%	21	-3.4	67	115	34	13	1.3	32	36	58	0.95	-0.24	0.13	52
2%	19	-2.8	64	111	32	13	1.1	31	34	53	0.90	-0.22	0.11	51
3%	18	-2.4	62	109	30	12	1.1	31	33	50	0.87	-0.21	0.09	50
4%	18	-2.1	61	107	30	12	1.0	29	33	48	0.85	-0.20	0.08	50
5%	17	-1.8	60	106	29	11	1.0	27	32	46	0.83	-0.20	0.07	49
10%	15	-1.0	57	101	27	10	0.8	24	29	41	0.77	-0.17	0.05	48
20%	12	0.1	53	94	24	8	0.7	21	26	36	0.69	-0.13	0.02	46
30%	10	0.7	50	90	23	6	0.6	20	24	31	0.63	-0.09	-0.01	45
40%	9	1.3	47	86	22	5	0.5	20	21	28	0.58	-0.06	-0.02	44
50%	8	1.7	45	82	21	4	0.4	19	19	24	0.53	-0.03	-0.04	43
60%	7	2.1	43	79	20	4	0.3	18	17	21	0.49	0.00	-0.05	42
70%	6	2.5	41	76	19	3	0.3	17	14	17	0.44	0.00	-0.07	41
80%	5	3.0	38	72	17	2	0.2	16	11	12	0.37	0.00	-0.09	40
90%	4	3.6	35	67	15	1	0.0	14	7	6	0.28	0.01	-0.11	39

PERCENTILE BREAKDOWN 2010-2011 BORN LIM-FLEX CALVES

Upper Percentile Group	Calving Ease Direct	Birth Weight	Weaning Weight	Yearling Weight	Milking Ability	Calving Ease Maternal	Scrotal Circum.	Stayability	Docility	Carcass Weight	Ribeye Area	Yield Grade	Marbling Score	\$MTI
1%	16	-4.0	68	122	37	10	1.0	23	30	61	0.58	-0.09	0.78	69
2%	15	-3.4	66	118	35	9	0.9	22	29	57	0.52	0.00	0.71	67
3%	14	-3.0	64	116	35	8	0.9	22	27	54	0.47	0.00	0.67	66
4%	14	-2.8	63	115	34	8	0.9	21	26	52	0.43	0.00	0.64	65
5%	14	-2.6	62	114	34	8	0.8	21	25	51	0.41	0.00	0.62	65
10%	12	-1.9	60	109	31	6	0.7	21	23	46	0.32	0.00	0.56	62
20%	11	-1.1	56	104	29	5	0.6	19	19	40	0.22	0.00	0.48	59
30%	10	-0.6	53	99	28	4	0.5	19	17	35	0.14	0.11	0.41	57
40%	9	-0.1	50	95	26	3	0.4	18	15	31	0.06	0.18	0.36	56
50%	8	0.3	48	92	25	3	0.4	17	14	28	-0.01	0.23	0.31	54
60%	8	0.7	46	88	24	2	0.3	16	12	24	-0.09	0.28	0.27	53
70%	7	1.1	44	85	22	2	0.2	15	11	20	-0.17	0.35	0.23	51
80%	6	1.6	41	81	21	1	0.2	14	9	16	-0.26	0.42	0.19	49
90%	5	2.3	38	75	18	0	0.1	13	6	9	-0.39	0.50	0.13	47



Please send me your 2012 Coleman Limousin Ranch 34th Annual Production Sale Catalog.

Name _____
 Address _____
 Phone _____

SEMEN SPECIALS

I am interested in semen from your herd sires:

- COLE First Down Clone – undoubtedly one of the most influential sires in the breed's history. He is a multi-trait leader and is the breed's #1 ranked sire for stayability. First Down is the sire of the most Focus Dams in the Limousin breed. The success of a program is dependent on cows that produce and stay in the herd.
- Other Coleman Herd Sires: COLE Sudden Impact 50S COLE Windfall 144W COLE Toolbox 89T Coleman Production 608

20% discount on orders placed before Sale Day and 50% discount on orders of 100 units or more on any combination of Coleman Limousin Bulls

Ask us for a special price on these outstanding herd sires. If you'd like to contact us or visit the ranch, call us at 406/644-2300 or 406/644-2707.

Return this form to: **Coleman Limousin Ranch, Larry & Trent Coleman, 53717 Gallagher Road, Charlo, MT 59824**



COLEMAN LIMOUSIN RANCH

Larry & Anita • Trent & Melissa

53717 Gallagher Road
Charlo, MT 59824

RETURN SERVICE REQUESTED

Coleman Limousin Ranch 34th Annual Production Sale Monday, April 2, 2012

Sunday, April 1, 2012

All day cattle viewing

6:30 pm – Complimentary Dinner

Monday, April 2, 2012

11:30 am – Lunch

1:00 pm – Coleman Limousin Ranch
34th Annual Production Sale

